

# Powering Together

#CEconf17



#CEF17

24th June – 9th July 2017



# Peter Holbrook

## Chief Executive Social Enterprise UK

@peteholbrook

@SocialEnt\_UK



# From protest to policy











**NO SOCIETY**



**BIG SOCIETY**



**SHARED SOCIETY**



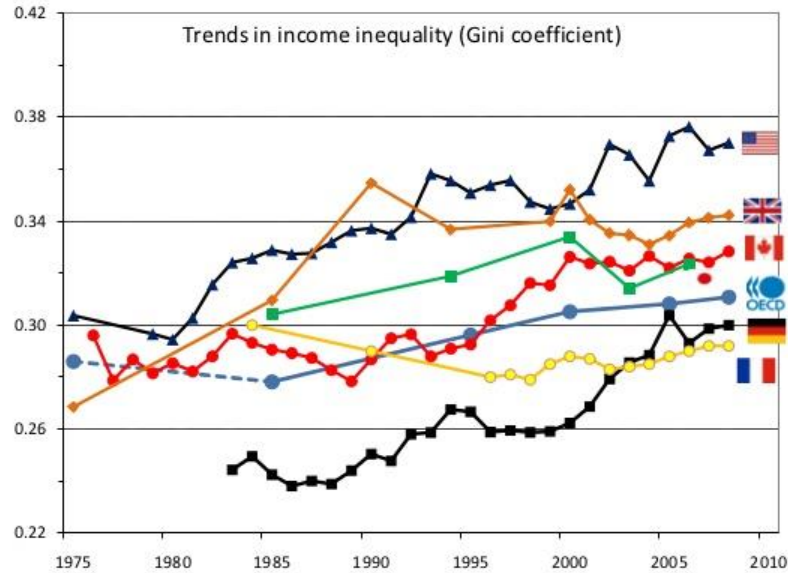








## Income inequality is at a record high in the OECD area



Source: OECD 2011, *Divided we Stand*. Note: Incomes are net incomes of the working-age population.



JUST  
**8** BILLIONAIRES OWN THE SAME  
WEALTH AS THE POOREST  
3.6 BILLION PEOPLE

[SO FEW THEY'D FIT IN THIS GOLF BUGGY]

DEMAND AN ECONOMY THAT WORKS  
FOR EVERYONE, NOT JUST THE FEW

**EVENITUP.ORG**

**EVEN  
IT UP**



**OXFAM**



## What we can expect over the next 10 years?

Strong and stable Government or political instability?

A stagnating economy or continued slow growth

Limited wage increases

Growth of the gig economy; flexible employment and further automation

Health and social care crises; further squeeze on public services – education, police, parks and green spaces, roads, waste management

Brexit, Brexit, more Brexit

Scottish Independence

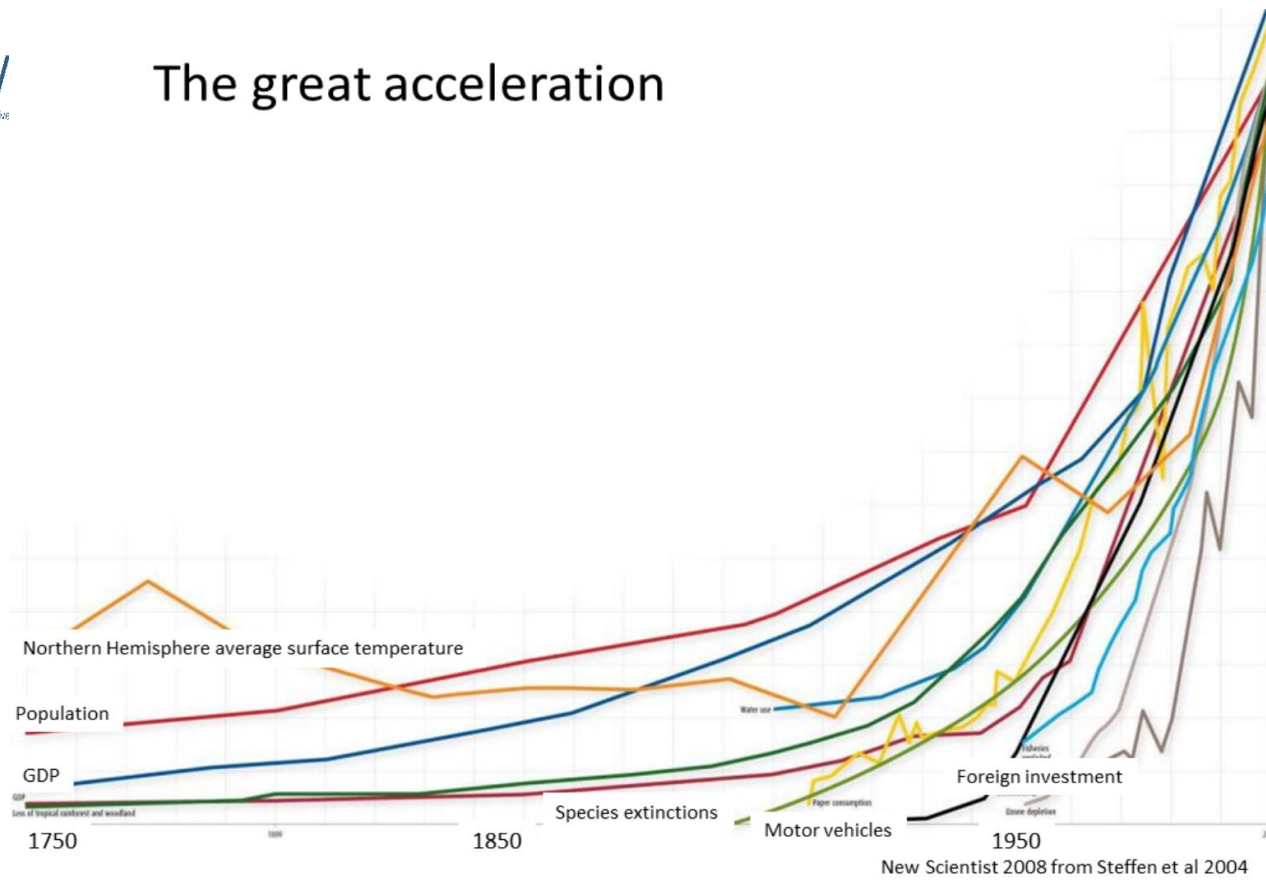
Global financial crisis 2.0?

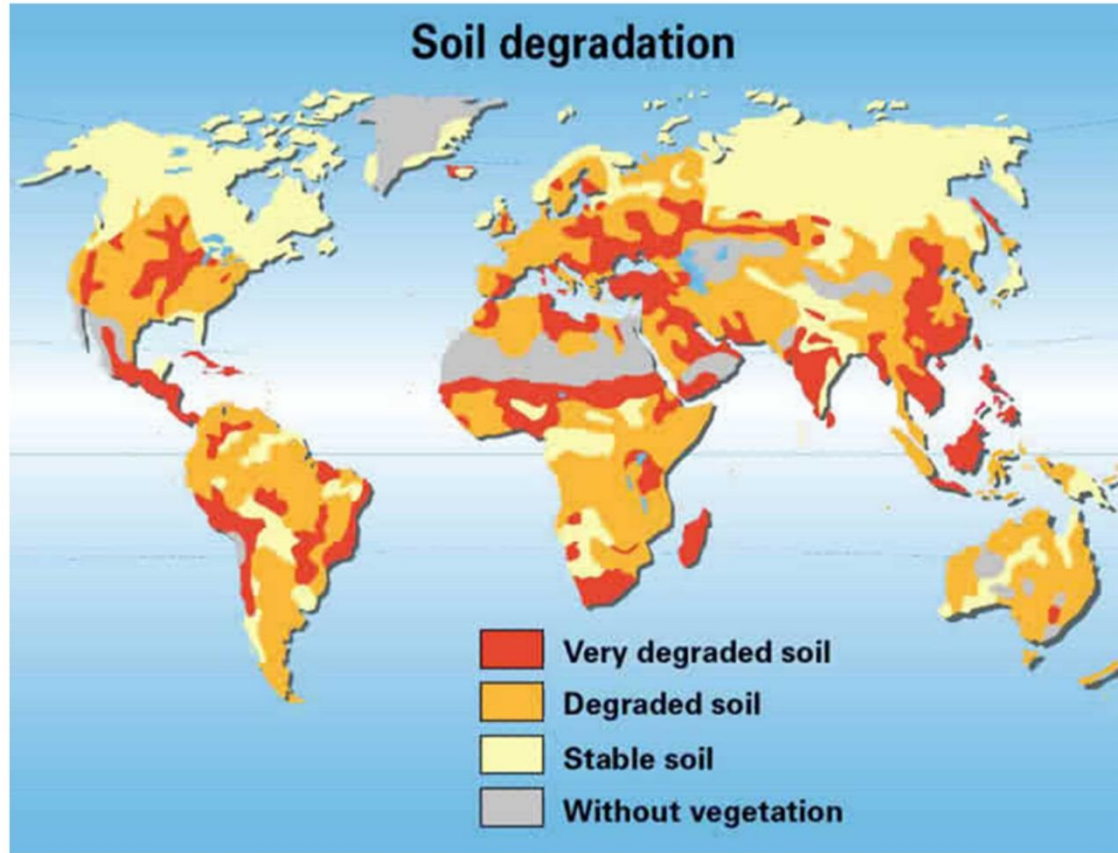
Global uncertainty, more terror.





# The great acceleration





*Philippe Rekacewicz, UNEP/GRID-Arendal*



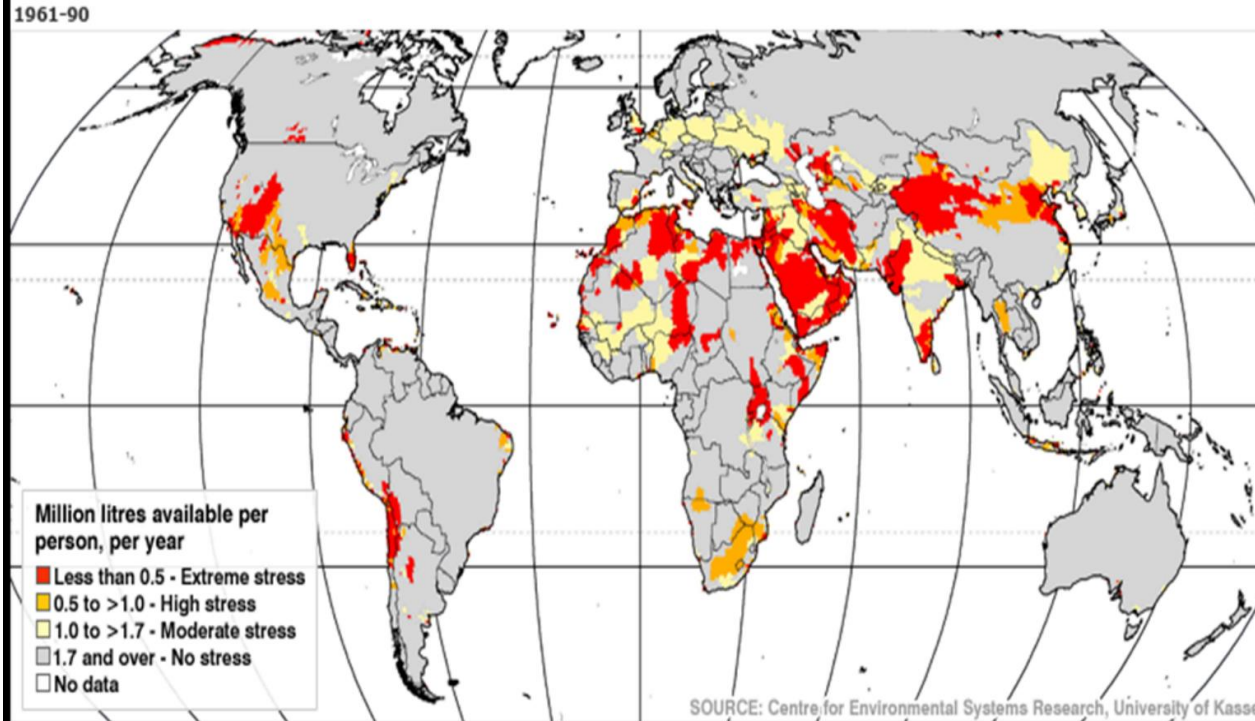
To meet the increasing demand from a growing population we will need to produce more food in the next 40 years than has been produced in the previous 8,000 years.

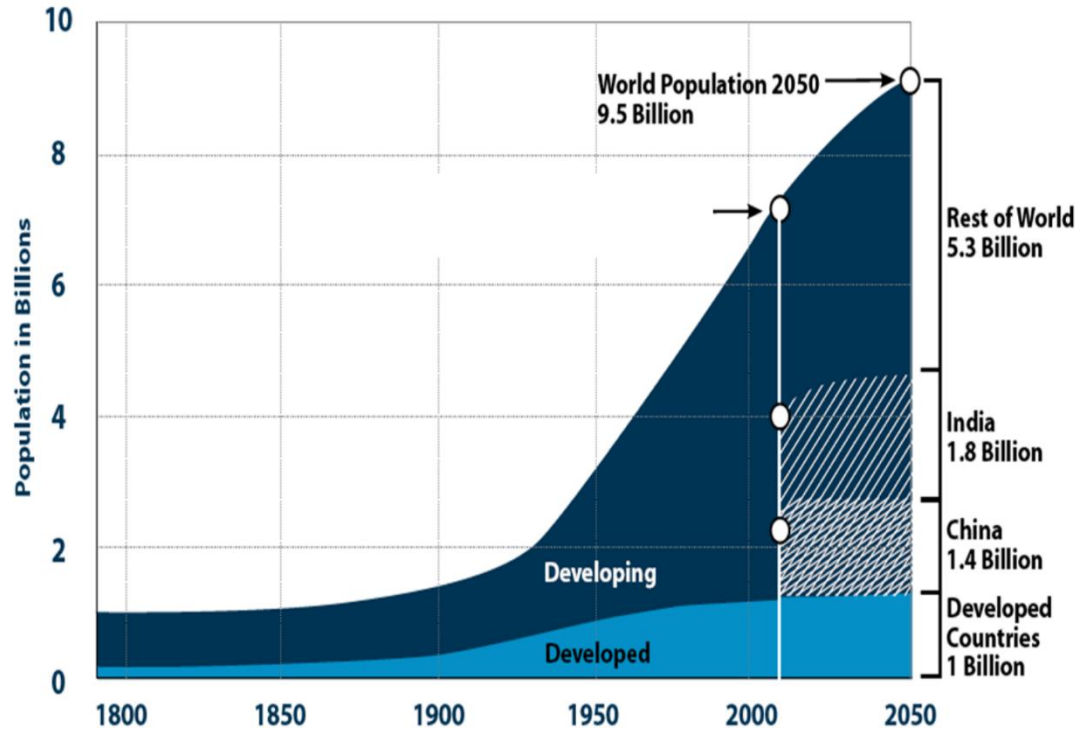
Jason Clay, Senior Vice President WWF

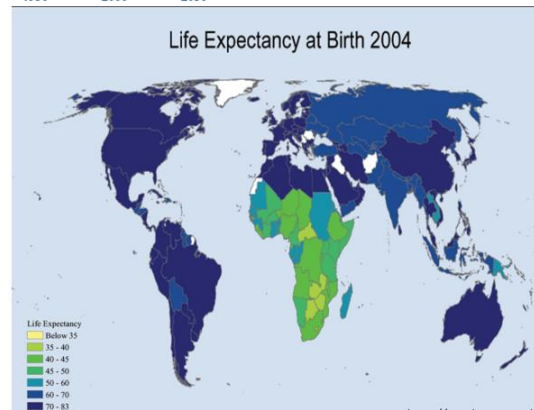
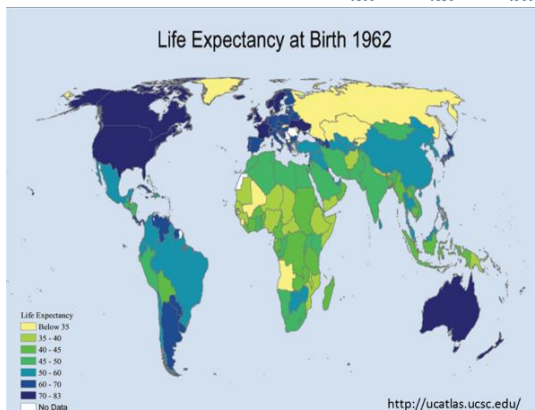
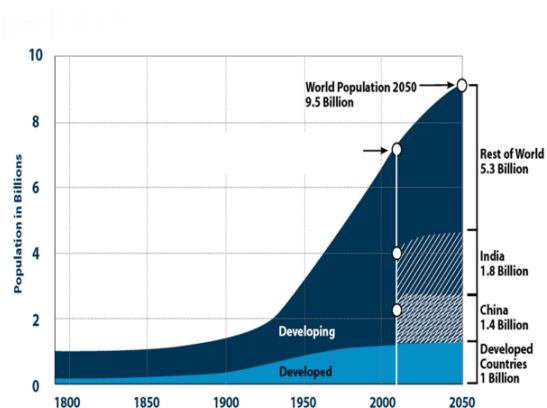




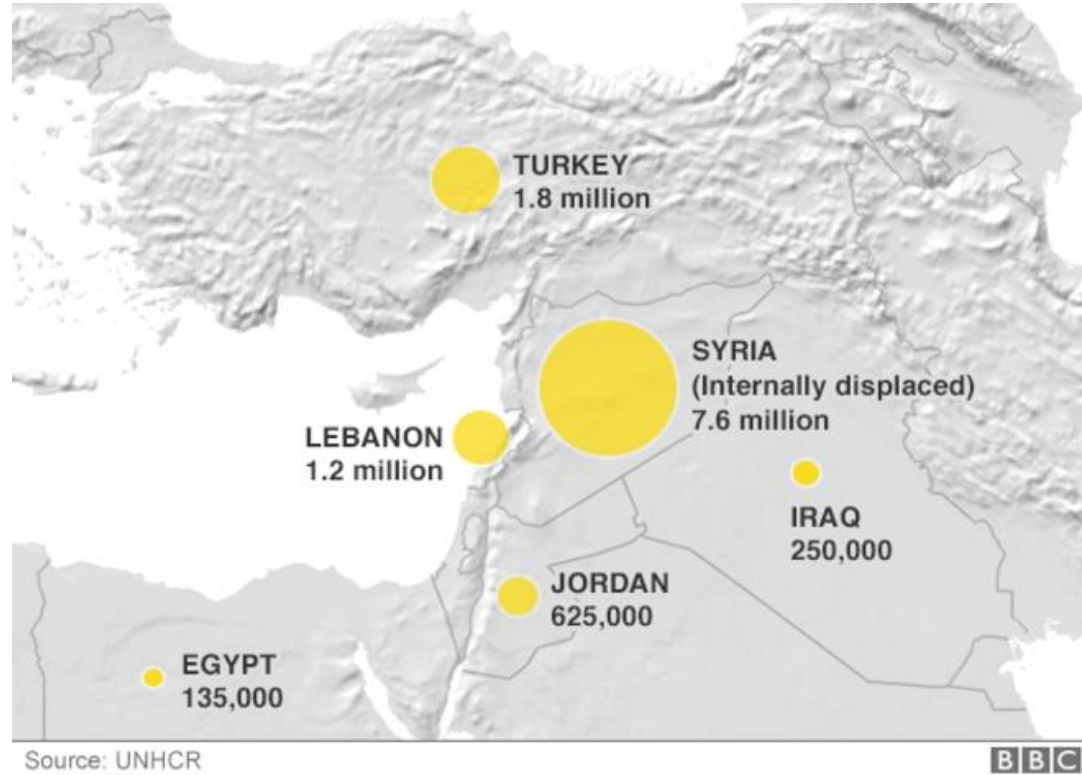
# Worsening per capita water availability



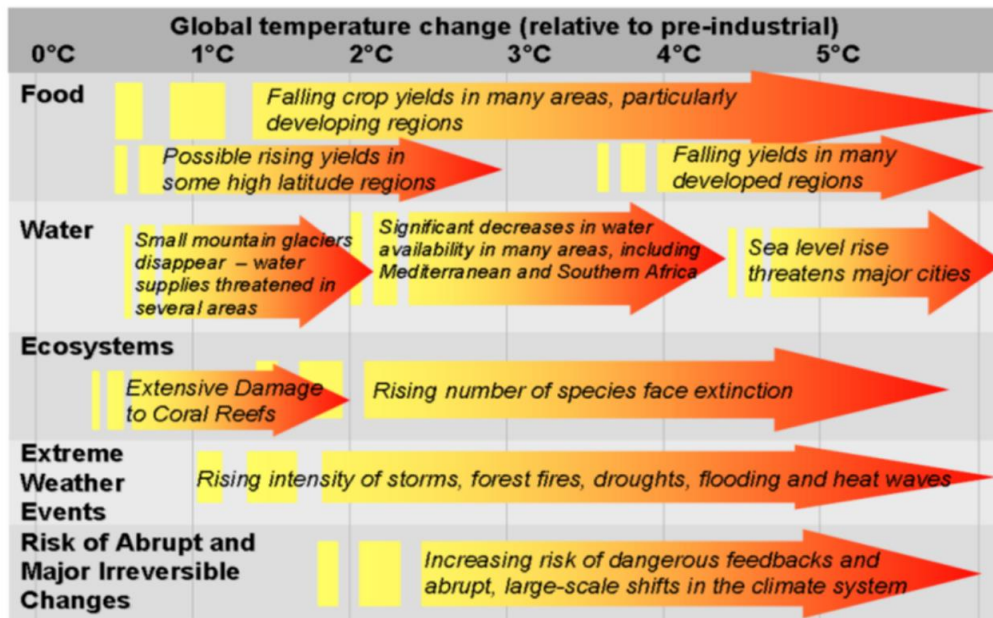




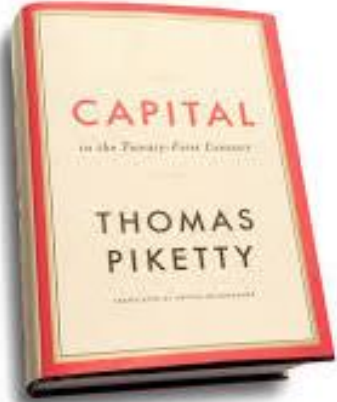
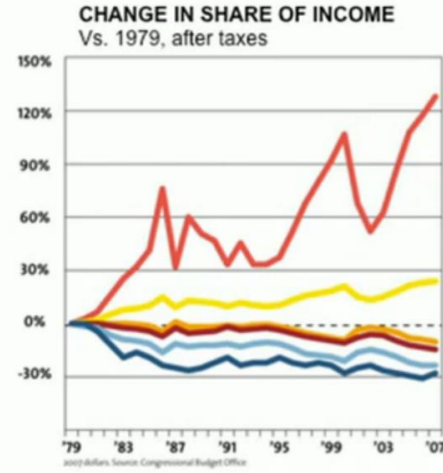
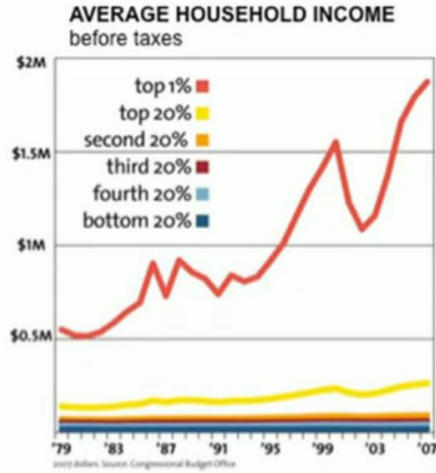




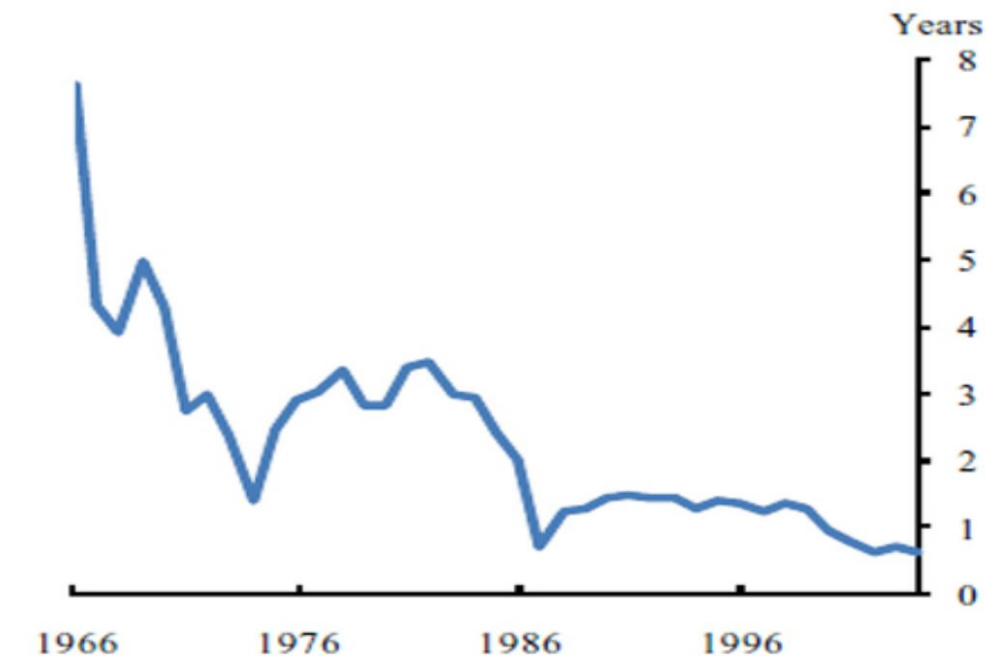
## Projected impacts of climate change



## The superrich have grabbed the bulk of the past three decades' gains.



## FTSE average holding period, 1966-2005



Source: London Stock Exchange

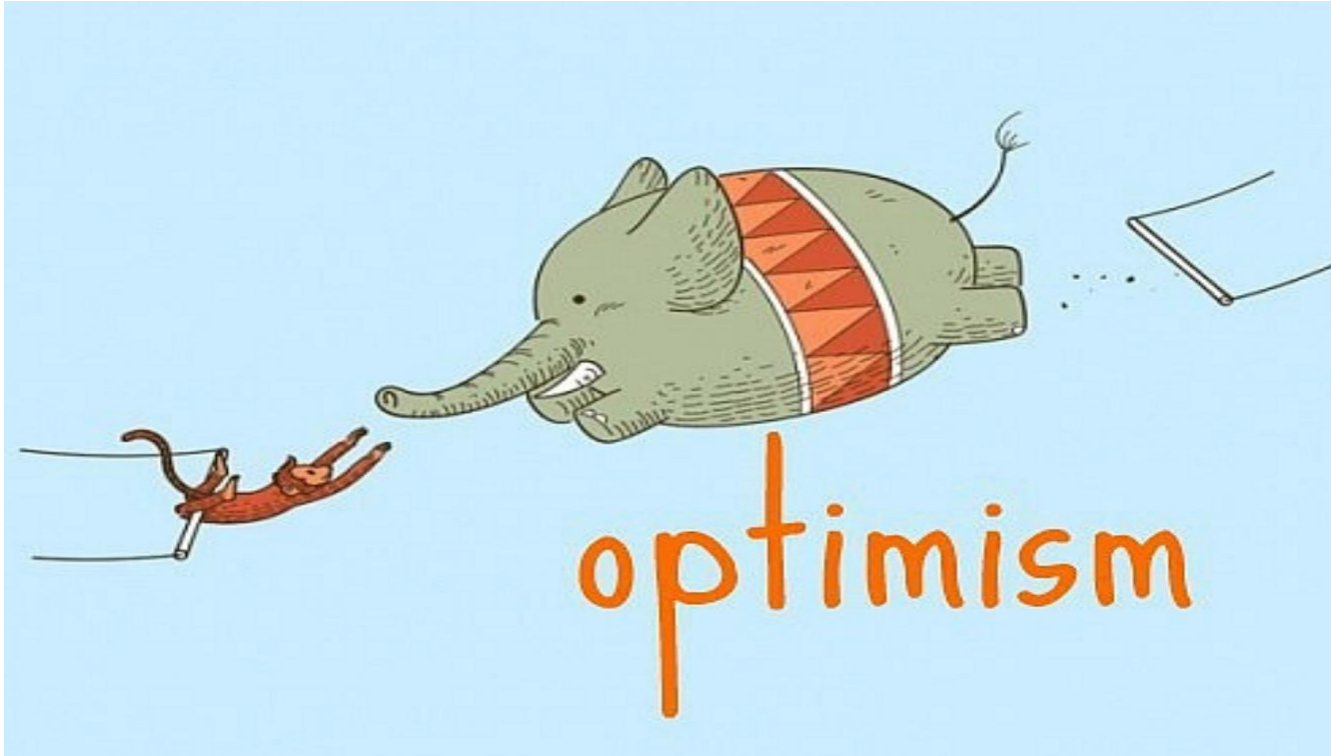


**Social  
Enterprise UK**

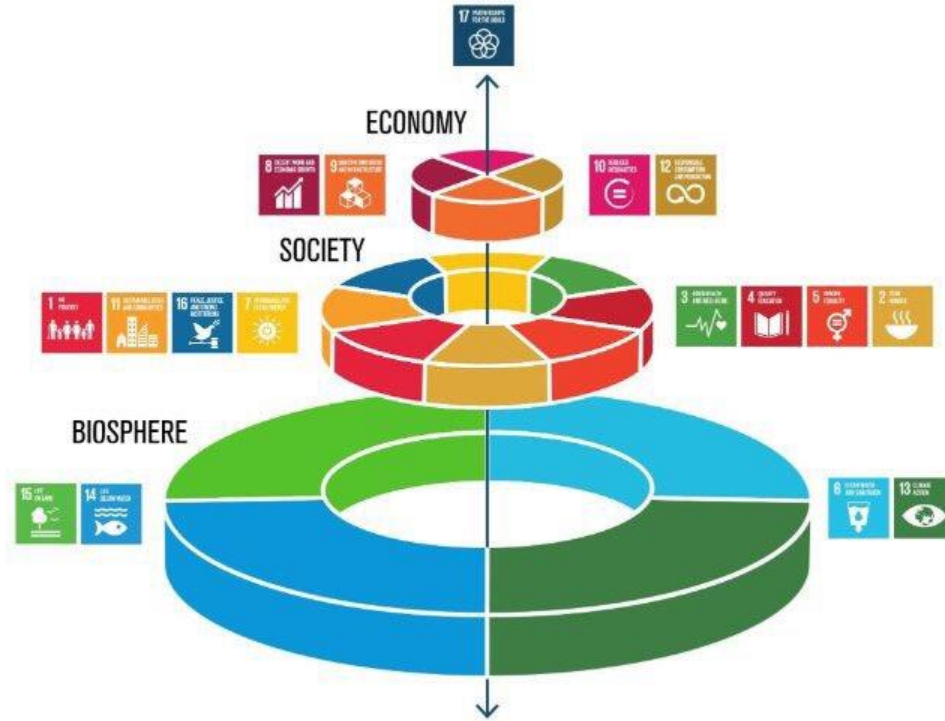
























## Community Wind Financing

A Handbook by the  
**Environmental Law & Policy Center**



**FAIRPHONE**





## Social Enterprise in the UK – state of play

- c. **78,000 social enterprises** in the UK (5% of all businesses)
- Contributing **c.£24 billion** to the UK economy and **employing over 1 million people**.
- Operate in **almost every sector**: from health and social care, to renewable energy, transport, retail and housing
- There are many **routes to joining the social enterprise family** including:
  - ‘spinning out’ of parts of the public sector
  - entrepreneur-led organisations
  - charities becoming more business-orientated
  - communities coming together to lead local services or run facilities
  - Cooperatives and mutuals



## What is a Social Enterprise?

**Business with a primary social or environmental purpose;**

1. Primary social or environmental mission
2. Trading
3. Profit distribution
4. Social ownership
5. Transparent reporting

=





Motivation





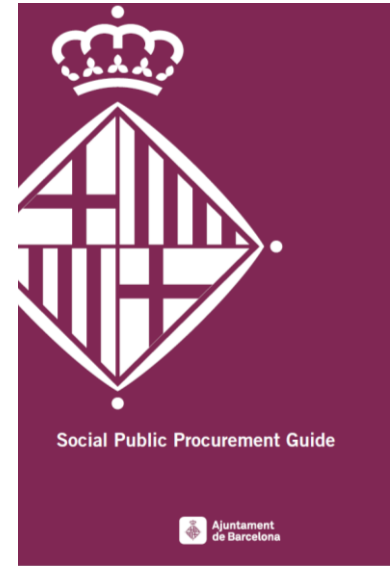
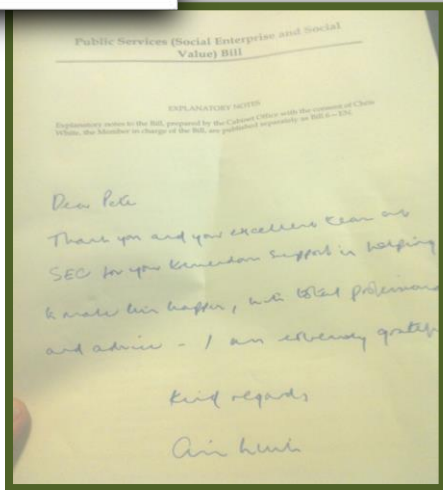


## Public Services (Social Value) Act 2012

Establishing 'social value' principles in public procurement



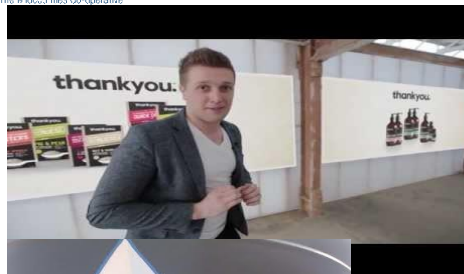
Public Services (Social Value) Act 2012











**SOCIAL ENTERPRISE  
WORLD FORUM 2017**  
CHRISTCHURCH - NEW ZEALAND 27-29 SEPTEMBER



“Today, successful businesses must play a catalytic role, not only managing our own economic, social and environmental impact; but creating value for all our myriad of stakeholders in collaboration with others...and responsible business and commercial success can be driven simultaneously”

***Paul Walsh, CEO Diageo***

“Any business that does not internalise social and environmental challenges is talking to itself and will, eventually, be rejected by its customers and its staff”

***Paul Polman, CEO Unilever***

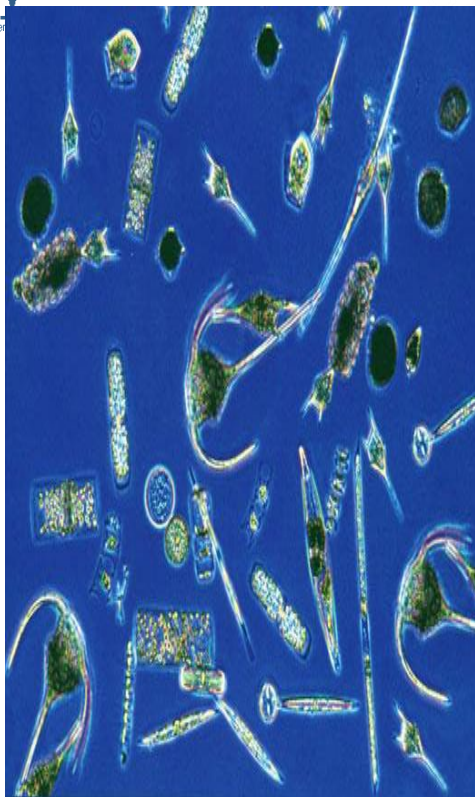






**SMALL ACTS, WHEN  
MULTIPLIED BY MILLIONS OF  
PEOPLE, CAN TRANSFORM  
THE WORLD.**





Vs



***“Every time you spend  
money, you’re casting  
a vote for the kind of  
world you want.”***

*Anna Lappe*



# Thanks!

[www.socialenterprise.org.uk](http://www.socialenterprise.org.uk)

Twitter: @SocEnt\_UK

@peteholbrook





# Powering Together

#CEconf17



#CEF17

24th June – 9th July 2017

