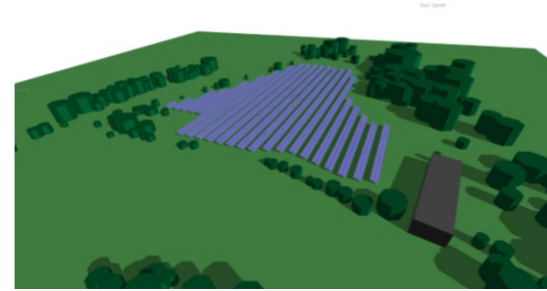


**Prospects Community Energy:  
Coach Road, Solar Meadow**

**RCEF Stage: 1 & 2**



**Key Facts**

Planning	The project is nearly ready for planning submission, it is expected that it will be granted.
Land	The CBS will be leasing the land from Prospects foundation charity.
Grid	A private wire is being run from the solar array to the nearby factory.

**Key Figures**

<b>Project size: Tech type</b>	Ground mounted Solar 2MWp
<b>Energy Generation</b>	1,760,000 kWh
<b>Private finance leveraged</b>	£1.5 million
<b>CO2 savings</b>	~400 Tonnes
<b>RCEF grant</b>	£15,600 + £ 89,550

**The Story**

PROSPECTS Foundation (the Charity) began work to develop a 2MWp ground-mounted array on a 3.5 hectare parcel of unused rough land in Oswaldtwistle through a Stage 1 RCEF grant. When the project was deemed to be feasible, the Charity set up a new Community Benefit Society, Prospects Community Energy successfully applied for an RCEF Stage 2 grant, to develop the project and raise the finance through a share issue. Due to the Feed-in Tariff subsidy being withdrawn, it has been important to find a high-energy consumer nearby, to directly import the electricity generated, rather than sell to the grid for a lower wholesale price. A factory nearby is going to buy up to 60% of the renewable electricity, which is helping them to decarbonise, but will also support the new Community Benefit Society to grow a community benefit fund.

**Challenges & Risks**

The process of agreeing on a Power Purchase Agreement with the factory has taken a long time to negotiate – we are dealing with a multinational company, so it can be difficult to get hold of the decision-makers. There are still some legal issues to navigate regarding running the cable to the factory. Considerable uncertainty around costs and projected income in the current volatile energy market, along with high inflation, has made it difficult to reliably model the finances.

**Lessons Learned**

External support is essential but we should have done more during the RCEF development phase to recruit and build a level of business expertise within the governance of the CBS. Recruitment is ongoing.

**Further notes**

LEP area: Lancashire

Link for further info:  
[COACH ROAD SOLAR MEADOW – Prospects \(prospectsfoundation.org.uk\)](https://prospectsfoundation.org.uk)