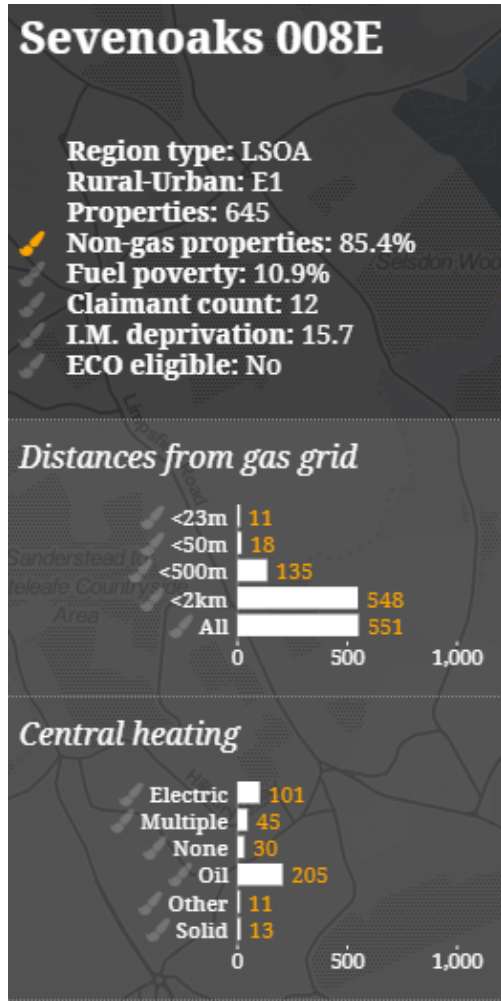
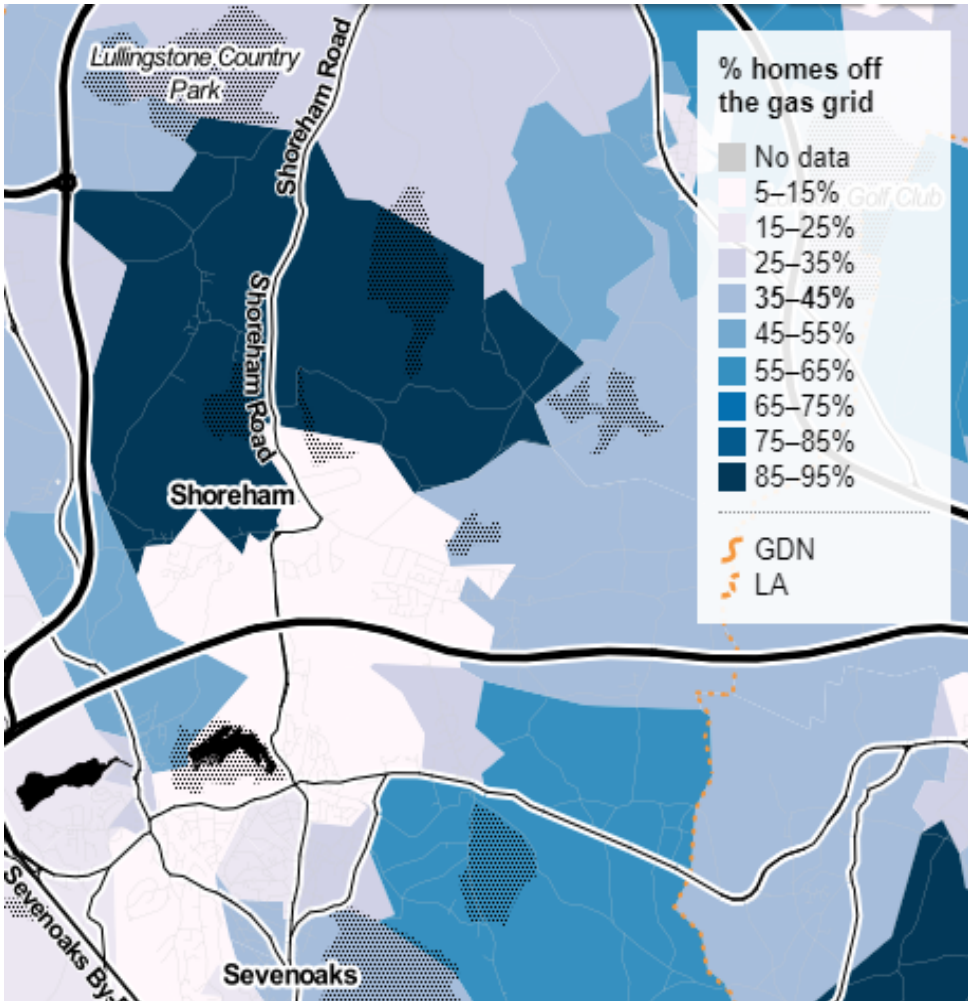


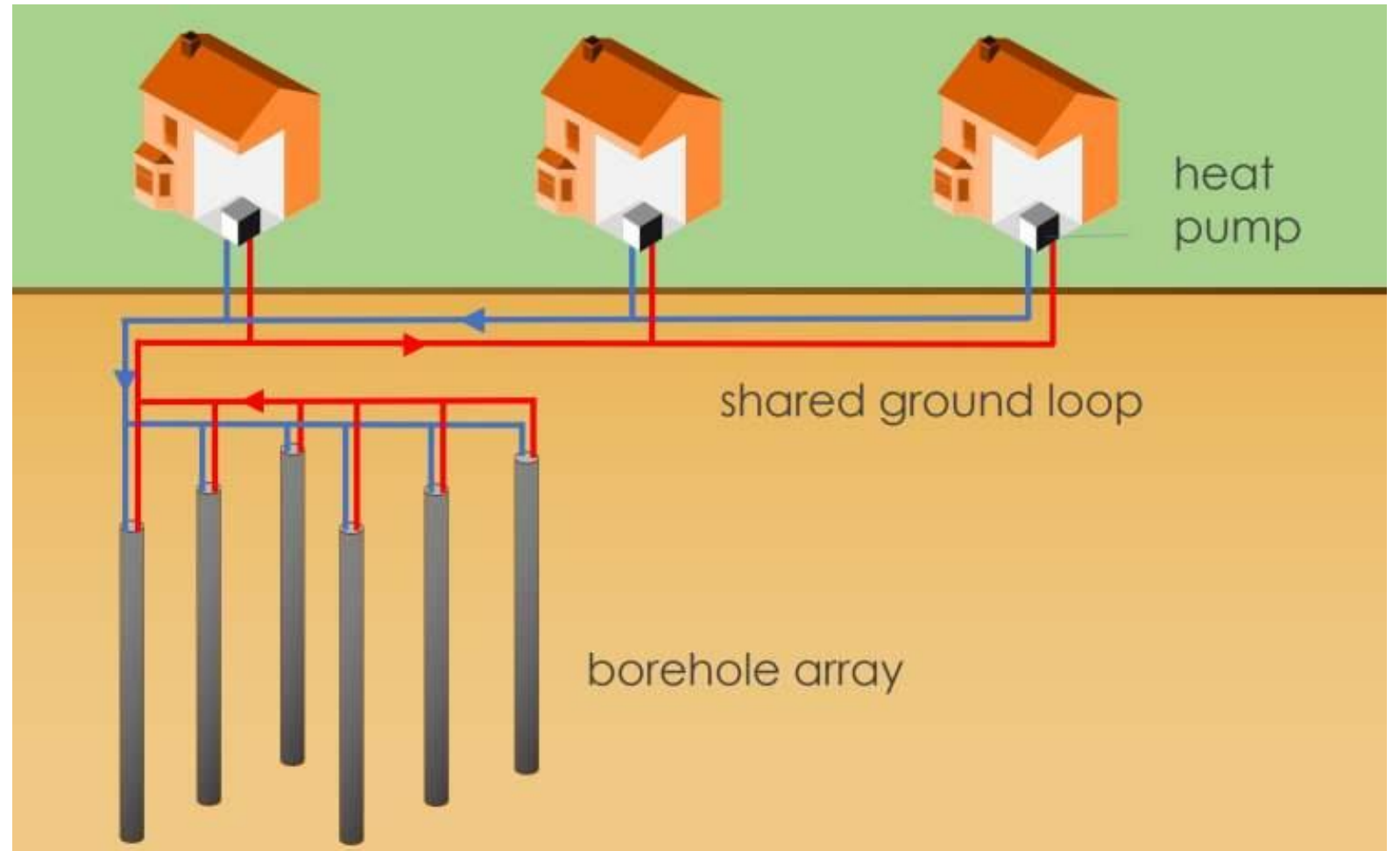
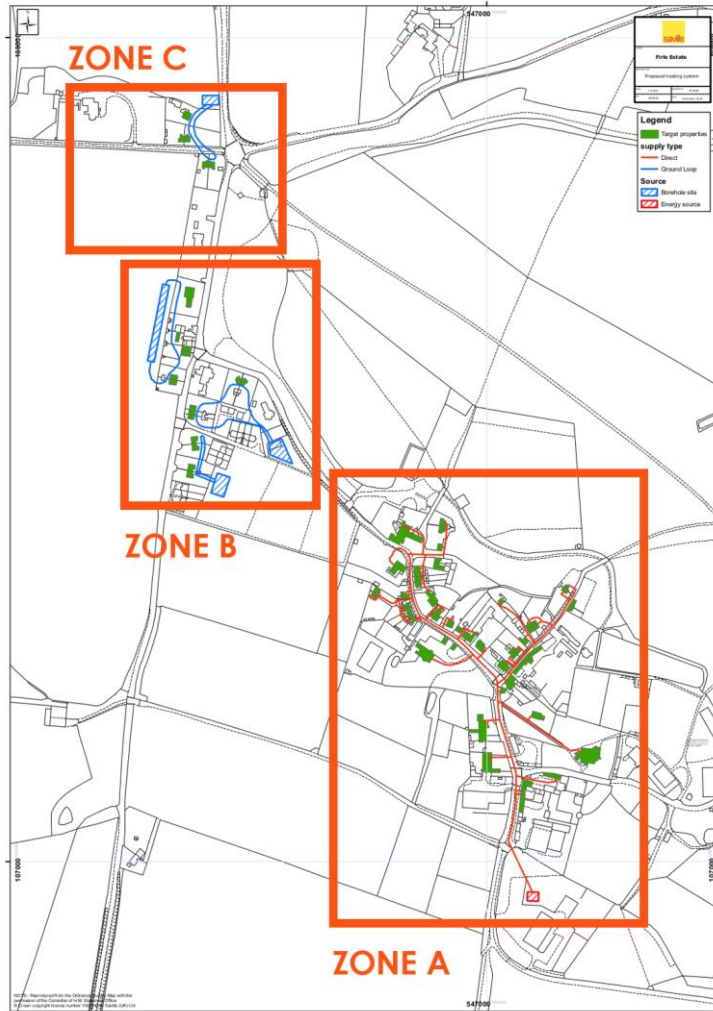
DECARBONISING HEAT IN OUR COMMUNITIES



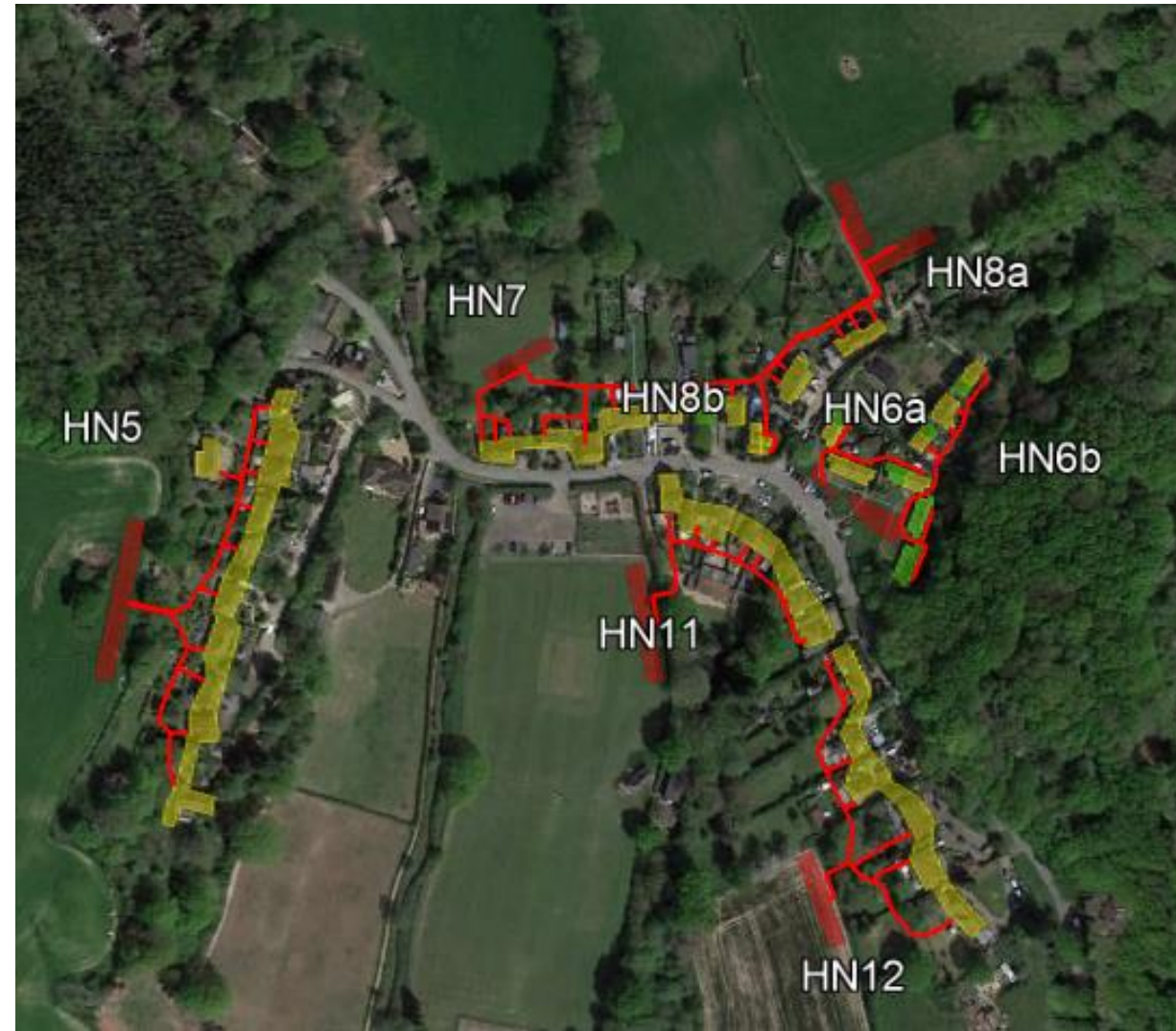
Shoreham, Kent



Firle Village, East Sussex



Crowhurst, East Sussex

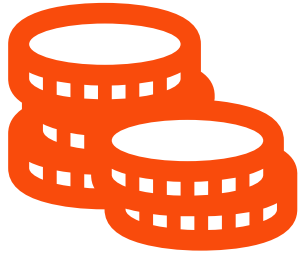


- Hilly terrain
- Large distance between properties
- Local grid constraints
- Small, conservative community
- Metrics: IRR | NPV | Cashflow

Economic issues

- Housing density
- Asset life
- Heat Supply agreement (term, price and consumer appetite)
- Funding mechanisms
- Permissions and permits / Grid constraints
- Thermal efficiency of homes (end cost to consumer)
- Subsidy support

Funding



Community bond
+ grant



Local Authority/
Share offer + grant



Private investment
Consortia + grant

QUESTIONS?



info@bhesco.co.uk

www.bhesco.co.uk

0800 999 6671



@BHenergyerservice



/BHESCO



bh_energy_services_coop