



# **The Climate Coalition**

## **Local Intelligence Hub Pack**

Contact: [localintelligencehub@theclimatecoalition.org](mailto:localintelligencehub@theclimatecoalition.org)

# What is the Local Intelligence Hub?

The Local Intelligence Hub is a platform to find and interrogate data about local MPs, constituencies, public opinion and the climate and nature movement in order to support our campaigning and organising efforts.

In collaboration with mySociety and Green Alliance, The Climate Coalition created the Local Intelligence Hub to bring together (with both local and national views) disparate sets of publicly available and private data. We recognised lots of data was around, or held by our members and stakeholders, but it was not easily accessible or interactive. We spotted a gap in the digital tools available to us and decided to create something new and useful to the climate, environment and development sectors.

## Explore data across the UK

Use data from The Climate Coalition, its member organisations, and the wider sector, to narrow down your focus to the constituencies that matter to you.

Experiment and visualise on our interactive map, then export as a spreadsheet for further analysis.

[Start exploring](#)



The screenshot displays a map of the United Kingdom with two data overlays. The first overlay, titled 'Great Big Green Week events 2022', shows a search filter set to 'is greater than 1'. The second overlay, titled 'MP majority', shows a color-coded legend ranging from yellow to dark blue, representing different levels of majority. The map itself is color-coded according to these filters, with various constituencies highlighted in shades of green and blue.

# A message from The Climate Coalition's Co-Directors

Read the full letter from The Climate Coalition's Co-Directors, Bronwen Smith-Thomas, and Jon Powlesland [here](#).



The Climate Coalition  
Romero House  
55 Westminster Bridge Road  
London  
SE1 7JB  
+44 0207 870 2213

Dear Members

We hope this letter finds you well. As co-directors of The Climate Coalition, we wanted to write directly to express our excitement about a new tool that we have been developing with digital tech specialists mySociety and political think tank Green Alliance; the [Local Intelligence Hub](#).

The Hub, which we are proudly launching today, is a platform that brings together publicly available and private data in one centralised, easy to use, organised digital space. You and your colleagues can head to the Hub and [request a login](#) right away. We'll also be sending this through in our member newsletter, but do make sure to pass on this launch letter to relevant colleagues.

The Local Intelligence Hub contains vital intelligence about local MPs, constituencies, public opinion, and the climate and nature movement. Our goal in creating this platform was to make it easier for our members and stakeholders to access and interact with this information in order to support our campaigning and organising efforts both at the local and national level.

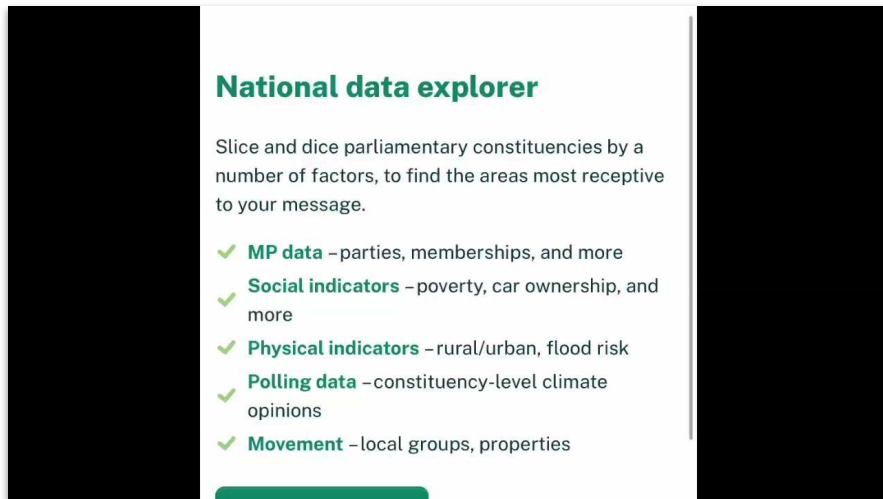


# How to use the hub

There are many uses for the tool and you will soon get to grips with using it. You will see options for searching for constituency pages, filtering by data criteria and building national maps of filtered constituencies.

You're able to download .csv files of your filtering criteria for further analysis. You can also add data columns to your table to pack it with the information that you need.

Watch the video to see some of the fundamentals of constituency pages and filtering.

A screenshot of a web interface titled "National data explorer". The interface has a white background with black text and green accents. At the top, the title "National data explorer" is in a bold green font. Below the title is a descriptive paragraph: "Slice and dice parliamentary constituencies by a number of factors, to find the areas most receptive to your message." Underneath this is a list of five data categories, each preceded by a green checkmark icon. The categories are: "MP data" (parties, memberships, and more), "Social indicators" (poverty, car ownership, and more), "Physical indicators" (rural/urban, flood risk), "Polling data" (constituency-level climate opinions), and "Movement" (local groups, properties). The interface is flanked by black vertical bars on both sides.

## National data explorer

Slice and dice parliamentary constituencies by a number of factors, to find the areas most receptive to your message.

- ✓ **MP data** – parties, memberships, and more
- ✓ **Social indicators** – poverty, car ownership, and more
- ✓ **Physical indicators** – rural/urban, flood risk
- ✓ **Polling data** – constituency-level climate opinions
- ✓ **Movement** – local groups, properties

# Hub Demo - share screen

# How can I add data to the Hub?

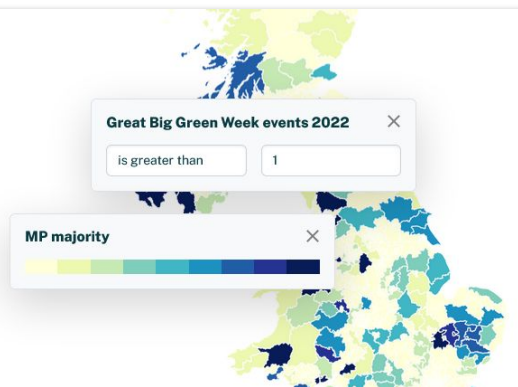
We can work with you to get your data incorporated into the Local Intelligence Hub. You can choose whether it's made available just to other Climate Coalition members, or to all users of the Hub. [Contact us](#) to arrange a call.

## Explore data across the UK

Use data from The Climate Coalition, its member organisations, and the wider sector, to narrow down your focus to the constituencies that matter to you.

Experiment and visualise on our interactive map, then export as a spreadsheet for further analysis.

[Start exploring](#)



# Terms of use

By using the Local Intelligence Hub, you agree to use the tool in the spirit of collaboration and to further our collective mission, rather than for singular gain or competition. We encourage respectful and constructive engagement with the data found on the platform.

Please respect the privacy and intellectual property rights of others when using the Local Intelligence Hub and attribute data sources when using them. Movement or privately flagged data is not to be published publicly unless it is already in the public domain.

If you are unsure about what can or cannot be used publicly, please get in touch with us at [localintelligencehub@theclimatecoalition.org](mailto:localintelligencehub@theclimatecoalition.org).

Thank you for using the Local Intelligence Hub.

## National data explorer

Slice and dice parliamentary constituencies by a number of factors, to find the areas most receptive to your message.

- ✓ **MP data** – parties, memberships, and more
- ✓ **Social indicators** – poverty, car ownership, and more
- ✓ **Physical indicators** – rural/urban, flood risk
- ✓ **Polling data** – constituency-level climate opinions
- ✓ **Movement** – local groups, properties

# Who we are

We are the UK's largest group of people dedicated to action against climate change. Along with our sister organisations [Stop Climate Chaos Cymru](#) and [Stop Climate Chaos Scotland](#), we are a group of over 130 organisations — including the National Trust, Women's Institute, Oxfam, and RSPB — and 22 million voices strong. We are reaching across the UK to show our love for all the things we want to protect from climate change, and to ask politicians to put aside their differences and commit to doing whatever is necessary to protect them.

