

yöunity
Our
coop | octopus
energy



Community Power Club

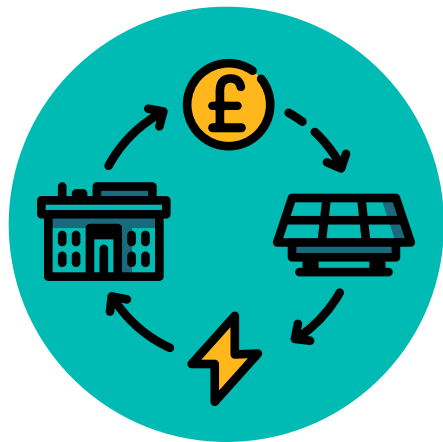
Licence Exempt Supply Offering

Powered by our parent companies



Introducing Younity

Our mission is to supercharge the community energy sector across the UK



Supporting Local
Projects

350

community energy
projects supported



Grant Funding

£80k

across 25 groups



Loan Finance

£1.5m

available



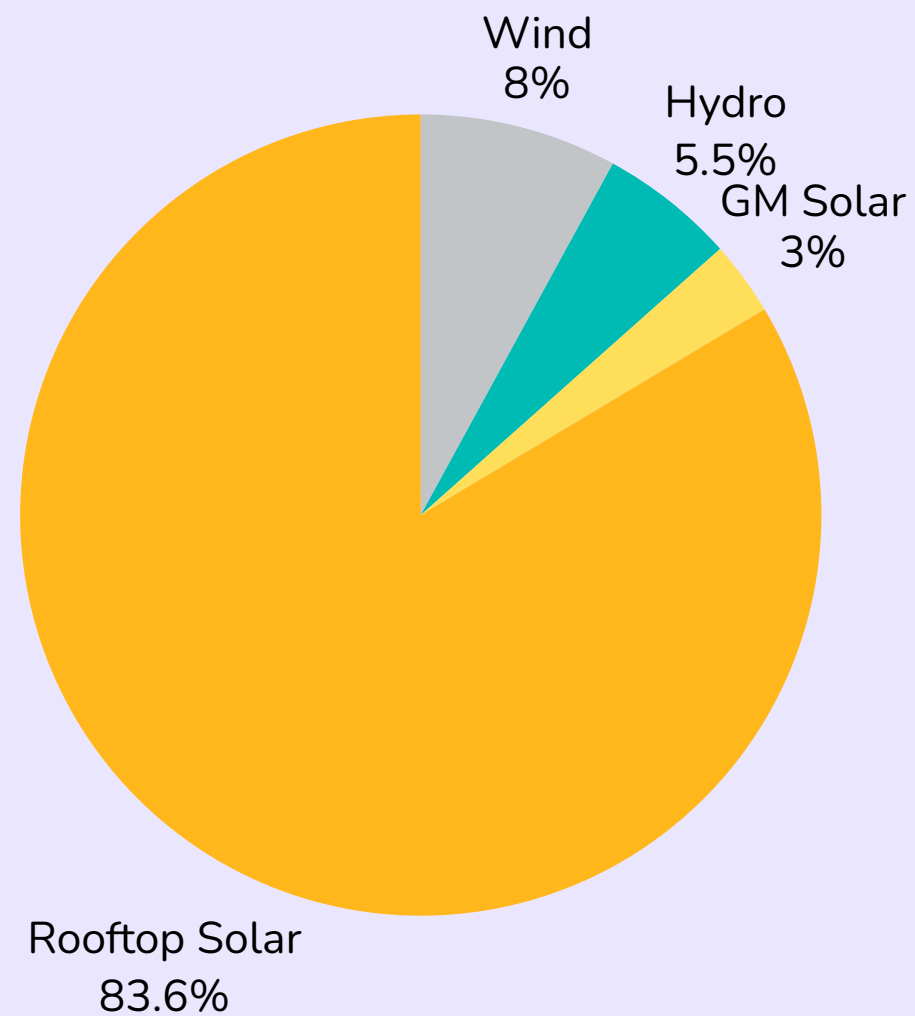
Community Energy
Connect

90%

opportunity fill rate



Younity's Power Purchase Agreements (PPAs)



- We have PPAs with 100 community energy organisations across GB.
- We work with around a third of the sector by volume.
- No project too small!
- Energy from Younity's PPAs ringfenced into the Community Power Tariff.



Community Energy Connect

Community Energy Connect is a free volunteer matchmaking platform introducing new talent and skills to the community energy sector.

Over 90% of volunteer opportunities posted on the platform have been successfully filled.

The platform is finding volunteers for a wide variety of roles, from project management and financial modelling to creative positions and general volunteering opportunities.



Scan me for 1:1 support





What is Licence Exempt Supply?

Allows electricity generators to supply directly to consumers **without holding a full electricity supply licence** as set out in the UK's Electricity Order 2001. For community energy generators, there are two important Class Exemptions:

Class C: On Site Supply

- Behind the meter sales of electricity
- Private wire sales of electricity



Class A Licence Exempt Supply

Class A: Small Suppliers

Persons (other than licensed suppliers) who do not supply any electricity except electricity which they generate themselves and who do not at any time supply more electrical power than 5 megawatts of which not more than 2.5 megawatts is supplied to domestic consumers.

A.1. For the purposes of Class A electrical power supplied by a body corporate which is associated with any supplier shall be treated as supplied by that supplier.

⚠ If you supply more than 5MW of any Class LES, you are not a small supplier



The P442 Modification

Allows eligible licence-exempt supply volumes to be excluded from some EMR levy calculations.

What does that mean?

- If a community generator's export is matched to a customer's usage in the same half-hour, that matched volume can be treated differently from normal licensed supply - creating a potential saving for the customer and uplift for the generator.



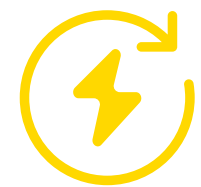
Volumes are only licence exempt when matched with consumers every half hour



Where does the value come from?



Levies are charged per MWh

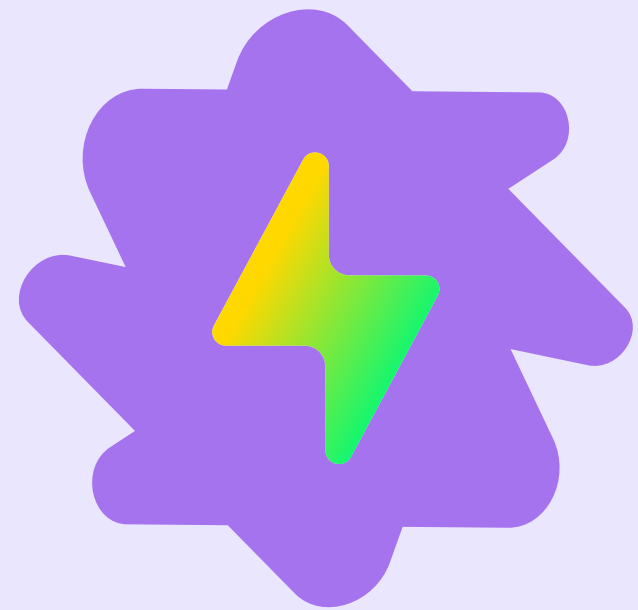


Some rates (particularly CfD) can change frequently



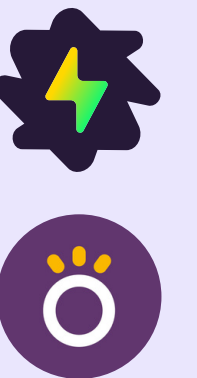
ESNA verifies matched volumes as licence exempt supply





Community Power Club

Licence Exempt Supply Offering



What is Community Power Club?



Supply your community if you have a PPA with Yunity



You set the parameters for joining, inc. whether the Club is open to domestic customers & businesses



Households → **Coop Energy's Community Power Tariff** & have a Smart meter
Non-domestic → **Octopus Energy Business** customers & have HH data



Generators promote the Club & sign an LES supply agreement



Yunity will work with Octopus Energy Business to help top up generation not matched by the club members using business customers



Benefits

Earn more for your power



Reduce energy costs for your community

Supply your generation to your members



Encourage energy use when renewables are generating

Open to households, community organisations and businesses



Involve more of your community in your project

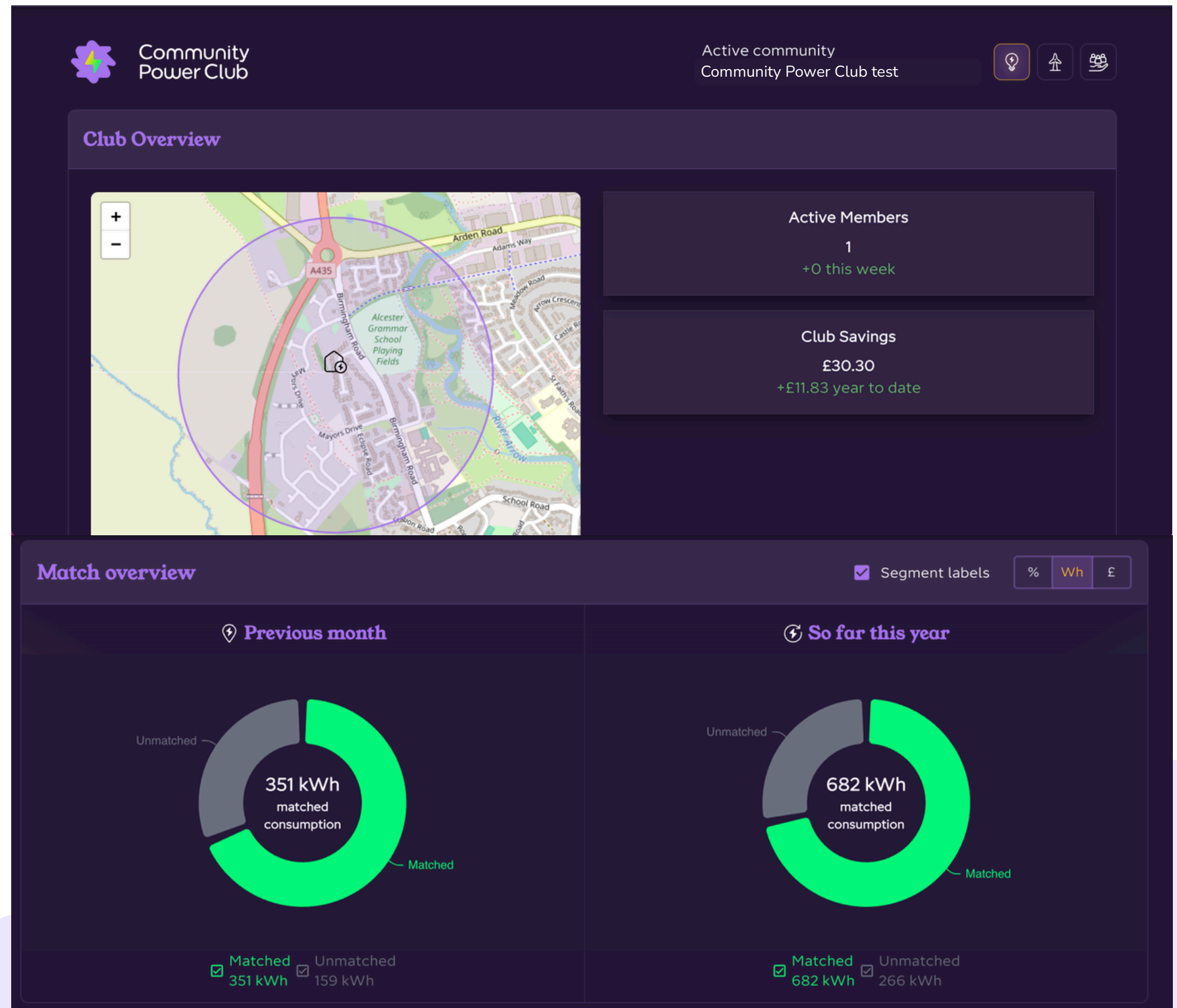
No geographical limitations



Dashboard

- Each club will have its own bespoke Community Power Club dashboard & app
- Show a Half Hourly overview of generation and consumption + how much has been matched
- Encourages members to match their consumption with generation for best chance of receiving a discount on their electricity bill

The more that is matched, the more you generate additional income for your project



Eligibility



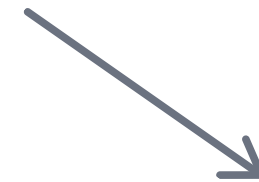
PPA with Yunity and agreement to LES terms



Cannot be in receipt of FiT Export or ROCs



Must be eligible as a Class A licence exempt supplier



For example

50 rooftop solar projects

On aggregate supply less than 5MW under Class C
Can participate in Class A on the export from these projects as total supply would be less than 5MW per hour at any time

For example

Two 3MW Wind projects

One has a private wire to a local factory, so is supplying up to 3MW under Class C
Leaves 2MW available for Class A



Yunity can advise, but you remain responsible for ensuring compliance

How to set up a Club



Check & agree

- Check you're eligible for Licence Exempt Supply
- Sign the LES agreement through Yunity



Set up Club

- Yunity sets up your Community Power Club
- Receive a resource pack to help build membership



Launch & grow

- Launch the club and share your join link
- Manage members online and earn £25 per switch as a Power Back Partner

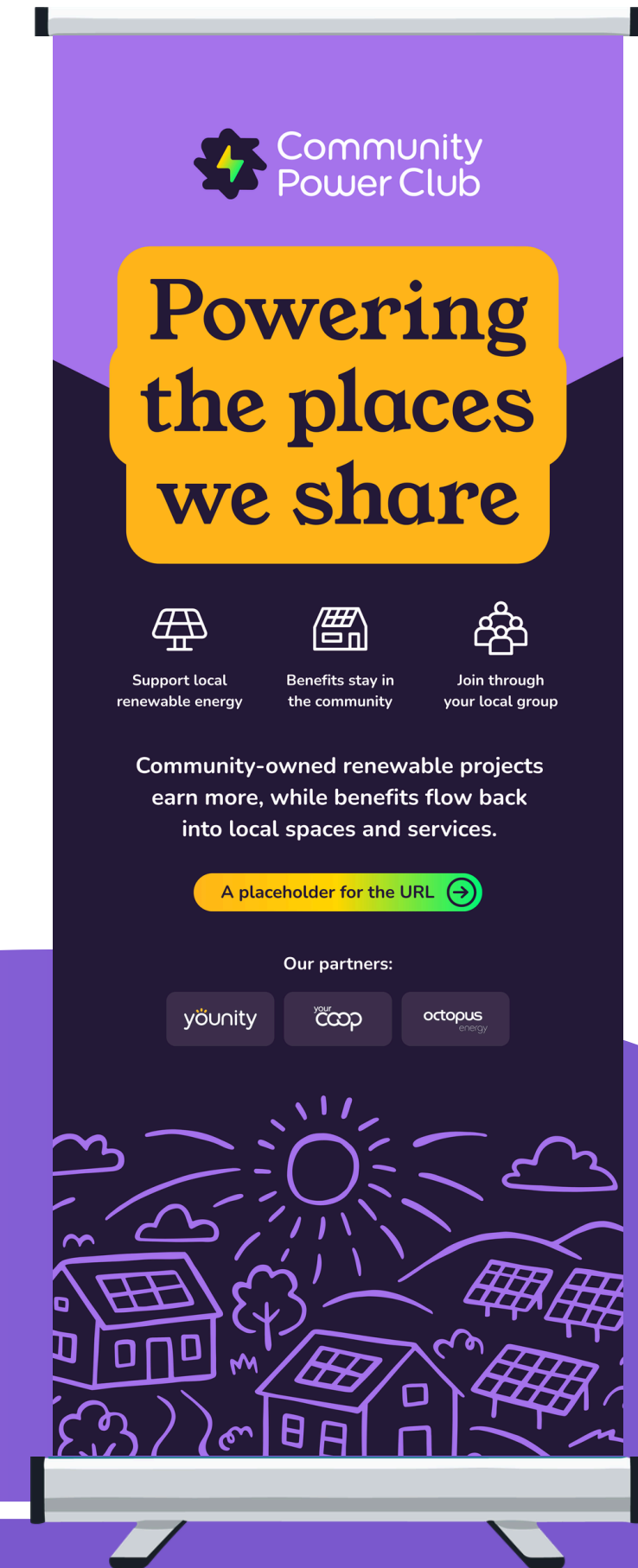
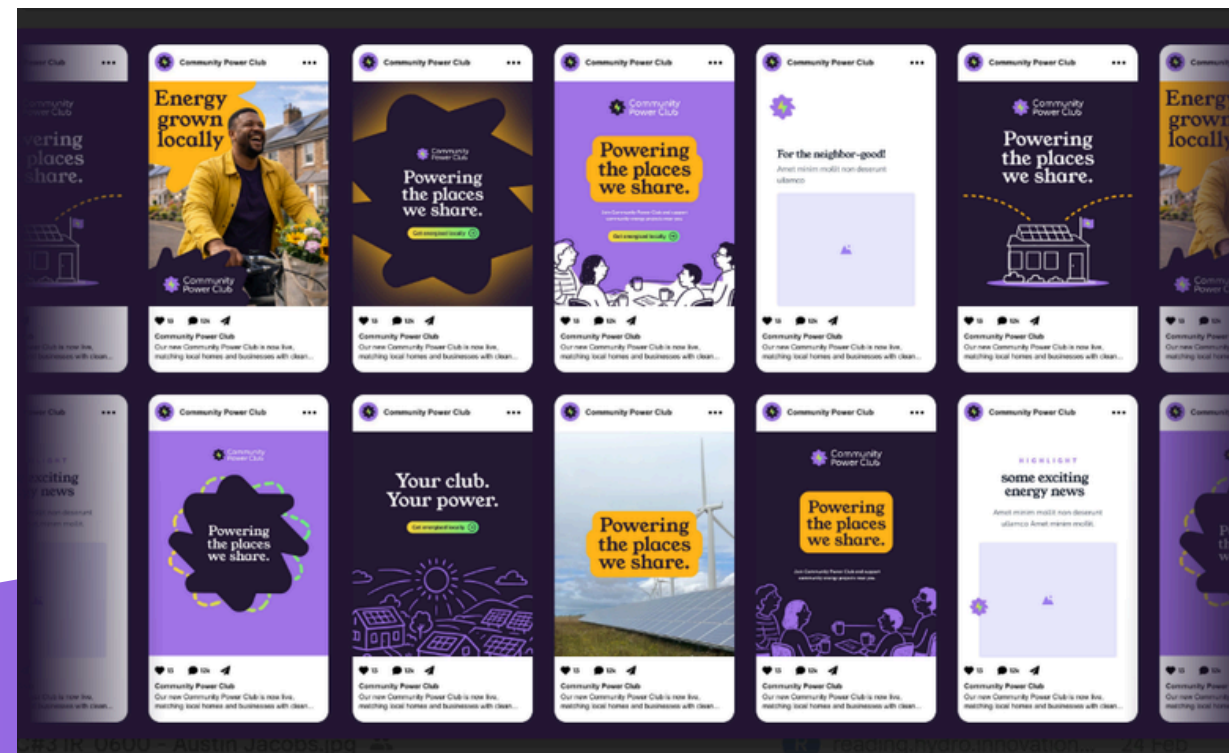


Yunity can advise, but you remain responsible for ensuring compliance

Resource Pack

We will provide community generators with a comprehensive resource pack for the development of your club including:

- Support with communicating how the club works, how to switch to the Community Power Tariff and how members can join
- Copy for leaflets, website, social media assets etc.
- FAQs





NORTH LINCOLNSHIRE
**COMMUNITY
ENERGY**

Community Power Club Plans

- Opportunity to bring in engaged sites that were found unfeasible for Solar
- To be available to local households and community groups
- Leisure Centre without usable roof space in mind - but more generation needed first





Contact Us

together@younity.coop

www.younity.coop/community-power-club